



Colmers Farm Primary School WEEKLY NEWSLETTER

Celebrating another special week at our
nurturing school



Every School Day Counts!



If your child is ill though, it is really important that you call the school office as soon as possible.

The school office is open from
7:30 each morning -
(0121) 716 0444. Thank you



Friday 29th April 2022

Dear Parents/Carers

I hope that you have had a good Easter break with your families. It is wonderful to see everybody safely back in school.

I would like to start this newsletter by officially welcoming two new members of staff to our school. In the office, as our new Office Manager, we have Miss Evans. She will be replacing Mrs Boston who will be returning to Green Meadow Primary School at the end of today. We all would like to thank Mrs Boston for all her hard work at our school, whilst we have been finding a permanent new Office Manager. We will really miss having her at our school.



I would also like to welcome Miss Nazir who has joined us as a new Assistant Headteacher and who will be teaching 5A for the remainder of this year. I am sure they will both be made to feel at home quickly.



A huge thank you to all of the children in Year 6 who gave up three days of their holidays to have some extra revision lessons in preparation for their KS2 SATs. Hopefully they found these sessions to be enjoyable and useful. Also thank you to Mrs Duggal and Miss Hughes for leading these sessions and to Mrs Taylor and Mrs Aulton for also being in school on these days.

Year 6 have been warming up for their KS2 SATs this week by completing their final mock tests before the real thing (WB 9th May). Few people enjoy tests, however Year 6 have coped with these admirably this week and have done really well. Well done Year 6 and good luck with the real thing. Just over a week to go.

The kitchen staff have now started their new menus for this term. Please check the 'School Meals' section of our school website for more details.

Thank you to all the parents who attended the Year 4 workshop on Tuesday this week about the Year 4 multiplication tables check. I know from the evaluations which you completed that you found this useful. We appreciate your support with helping your children to learn their times tables at home. Also, thank you to Miss Jennings and Miss Goddard for organising and leading this workshop.

DIARY DATES

02/05/22 ?
Eid al-Fitr (end of
Ramadan)

02/05/22
May Day bank holiday
(school closed)

09/05/22
KS2 SATs week

27/05/22
Last school day of school
before the half term
holidays

06/06/22
Children return to
school after half term

**Do you have a safeguarding
concern about a child?**

Contact:
[safeguarding@colmersfarm.
excelsiormat.org](mailto:safeguarding@colmersfarm.excelsiormat.org)

Alternatively contact
Birmingham City Council
Children's Trust on 0121 303
1888

Emergency out-of-hours
number: 0121 675 4806

What's new on our website
this week?



- Year 2 SATs meeting presentation (Year 2)
- Updated clubs timetable (extra-curricular activities)

www.colmersfarm.excelsiormat.org

I have started to see some topic homework coming into school which is great. Please keep this coming in, we love to see what you can produce with your children. Completing this homework helps to engage children with their topics and it also improves their subject knowledge.

I hope that all of our families and staff that are celebrating Eid al-Fitr next week have a lovely celebration.

I hope that you have a lovely, restful long weekend. We will see everybody back in school on Tuesday 3rd May.

Thank you for your continued support.

Mr Williams (Headteacher)

School Matters!



Attend Today, Achieve Tomorrow

90% in a test. Great!

percentage	grade
90% - 100%	A
80% - 89%	B
70% - 79%	C
60% - 69%	D
59% and below	F

90% attendance is however concerning!

In a year that's

- 19 missed English lessons,
- 19 missed maths lessons;
- 19 missed phonics or reading lessons!

Happy Birthday Messages

For next week, we would like to wish a very happy birthday to:

Ruby OK

RC

Age 5

Henry R

4G

Age 9



Please follow us on Twitter!

Our Twitter feed is where we celebrate the wonderful learning we see from our pupils everyday!

@Colmers_FarmPS



e-safety – Keeping your children safe online.
Does your child know these rules?

S

Stay Safe

Don't give out your personal information to people / places you don't know.



M

Don't Meet Up

Meeting someone you have only been in touch with online can be dangerous. Always check with an adult you trust.



A

Accepting Files

Accepting emails, files, pictures or texts from people you don't know can cause problems.



R

Reliable?

Check information before you believe it. Is the person or website telling the truth?



T

Tell Someone

Tell an adult if someone or something makes you feel worried or uncomfortable.



Pupil e-safety challenge



What is Catfishing?

- It is a fishing term used to describe when somebody is fishing for catfish.
- It is a type of computer virus.
- It is somebody pretending to be somebody else online.



This week's answer = C. Unfortunately, some people pretend to be somebody else online. This is often done to trick others into revealing private information, for bullying or to get money from others. Always be careful about who you are chatting to online.

Help your child become a better **READER**

Questions to ask your child while reading
nonfiction text.

- What is the main idea of the text?
- Can you tell me something you already know about this topic?
- What did you learn from reading the text?
- Are there any words that you do not know what they mean?
- What are some new words that you learned?
- Do you have any questions after reading this?
- Were there any features (diagrams, charts, pictures) that were important?
- Where could you find out more information about this topic?
- What questions would you ask the author about this topic?
- What would be a good title for this text?
- Can you think of another book that you have read about this topic? How was it similar? How was it different?
- Did you like the text? Why or why not?

fun-in-first.blogspot.com

READ, READ, READ!

Reading is a key skill which is so important to any child's development at any age. Please try to listen to your child read at least once a day (for 10-15 mins ideally). It's also great for children to listen to you reading aloud as well.

As you know, our children in Years 1-6 have access to thousands of books online via myON. If you need help accessing this, please contact your child's

good readers...



Help your child become a better **READER**

Questions to ask your child while reading
fiction text.

- Who is the main character?
- What is the setting in the story? Does the setting change?
- What was the problem in the story and how was it solved?
- Did the character change during the story? How?
- How are you like the main character? How are you different?
- What do you predict will happen next in the story?
- Why do you think the author chose this title for the story?
- Do you like the title of the story? Why or why not?
- Can you think of a different title for the story?
- Which character from the story would you choose to be your friend? Why?
- Which part of the story was the most exciting? Why?
- Did you like the end of the story? Why or why not?
- Which parts in the story could really happen? Which parts could not really happen?

fun-in-first.blogspot.com

Questions to ask your child when reading to them.



Accelerated™
Reader

	Class Name	Number of Points
1 st	6B	1,399,980
2 nd	6D	722,929
3 rd	5T	202,361
4 th	4J	144,575
5 th	5A	61,885
6 th	4G	42,399
7 th	3T	39,960
8 th	3H	17,087



Spelling Shed 

	Class Name	Number of Points
1 st	4G	85,620,951
2 nd	3T	59,673,727
3 rd	6D	22,807,450
4 th	6B	15,556,366
5 th	5A	9,443,200
6 th	2H	3,153,173
7 th	3H	2,677,590
8 th	1W	1,509,497
9 th	1K	1,049,851
10 th	4J	602,792
11 th	5T	126,184
12 th	2B	103,872
13 th	1F	10,000

Mathletics

	Class Name	Number of Points
1 st	4G	19,920
2 nd	3T	18,412
3 rd	6B	13,640
4 th	5T	9,360
5 th	3H	7,023
6 th	2B	6,080
7 th	6D	5,729
8 th	2H	4,097
9 th	4J	2,150
10 th	5A	1,000



Accelerated™
Reader

Spelling Shed 

Mathletics

Top 3 pupils - last week's top scorers	
1 st	Rubenn (6B) 645,145
2 nd	Roxanne (6D) 298,240
3 rd	Jake (6D) 190,858
Record Score	
Laila (6D) 787,079 words	

Top 3 pupils - last week's top scorers	
1 st	Henry (4G) 48,881,420
2 nd	Ryan (4G) 40,126,488
3 rd	Niamh (3T) 24,859,974
Record Score	
Henry (4G) 65,604,074	

Top 3 pupils - last week's top scorers	
1 st	Stefania (5T) 7,730
2 nd	Hao Xuan (6B) 4,930
3 rd	Timothy (3T) 4,182
Record Score	
Khaleesi (2B) 12,770	



ATTENDANCE



2B



6D

This year's best attendance so far! Well done!

We are now halfway through the academic year. The table below shows the current attendance percentage to date for each class.

Remember: our school target is 96% or above!

Our whole school attendance to date is: **91.1%**

Class	% attendance this week	Number of lates this week
RC	75.5%	8
RF	85.0%	3
1F	87.6%	3
1K	94.0%	5
1W	83.5%	5
2B	98.6%	7
2H	93.7%	4
3H	96.3%	13
3T	96.2%	7
4G	92.5%	1
4J	96.9%	4
5A	90.4%	9
5T	89.2%	7
6B	93.8%	5
6D	97.9%	2

This Week's Hot Chocolate Winners

Congratulations to all of our hot chocolate winners this week. They are:

Jack	RF
Lily	1F
Ellis	2B
Mariam	3T
Beth	4G
Shajenna	5T
Glauken	6B



This week's congratulations assembly recipients

Well done to:

Callum B	RF	Kade E	1W	Syke D	1K
Kayla A	2B	Isaiah H	2H	Lola D	3H
Jake S	3T	Charley D	4J	Beth D	4G
Oliver B	5A	Lily T	6B	Isabelle D	6D



You have all demonstrated the key quality of reilience this week.

This week's house point results

246

Farah

246

Thompson

239

Daley

247 

Ennis-Hill

School Uniform

At Colmers Farm Primary School, we place a high priority on our children wearing the correct school uniform. Please note that our children are not allowed to wear trainers in school, unless this is short term with prior agreement.

For details about our school uniform requirements, please see the uniform section on our school website.

Thank you for your support with this.

Help with School Uniform



Rubery Community Swap Shop is a fabulous organisation which helps families by providing pre-loved school uniform, PE kit and footwear to them **FOR FREE**. Please visit www.ruberyswapshop.co.uk or ruberyswapshop@outlook.com for more information.

TIPS TO BUILD EMOTIONAL RESILIENCE IN KIDS

**Spend quality
time with kids.**
When they feel loved
and supported, children
develop emotional strength.

**Talk about
feelings so your
child learns to share
their worries and fears
with people they trust.**

**Instead of rushing to solve
problems, give kids time to
work things out themselves.**

**When children experience
failure or disappointment,
it's important to praise their
effort and encourage them
to try again.**

**Acknowledge your own
mistakes to teach kids
that mistakes are
essential for learning
and growth.**

**If your child can't find
a solution to a problem,
use gentle questioning
to guide them
towards it.**

**Ensure kids are eating
well and getting
enough sleep and
exercise.**

What should I do if I have any concerns about my child's mental health?

Please speak to your child's class teacher or a member of our school's pastoral team (Mrs Taylor, Miss Evans or Miss Storer).



Out of School Club Provision

for children from Rubery Nursery
School and Colmers Primary School*

*up to the age of 8 years old



Our Out of School Club offers children from 2 – 8 years old a safe and friendly environment with qualified and experienced members from our staff team. Children can choose from a range of activities relevant to their age and ability.

We offer snack to the children during the session. They can choose between cereal or toast for breakfast if they arrive before 8.30am and will receive a biscuit and a drink before 4.15pm. A light tea is offered for children staying after 4.15pm. For more information, please request a prospectus or phone us on the number below.



Breakfast Club is open from **7.30am - 9.am**
and After School **3.00pm - 5.30pm**

For more information and prices please contact our Reception on
0121 464 2158 or visit us at:

Leybrook Road, Rubery, Birmingham B45 9PB

www.ruberyn.bham.sch.uk



@RuberyNursery

Inspiring Independence, Confidence and Curiosity

Help for all families in Birmingham



Food
& Energy



Youth
Support



Domestic
Abuse



Emergency
Funding



Money &
Debt Advice



Data & IT



Under 5's
Support



School Uniforms
& Clothing



Parenting



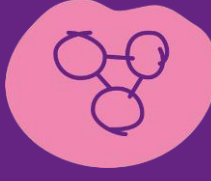
Special Needs
& Disabilities



Bereavement



Housing



Sexual
Health



Mental
Health



Play



Birmingham Children's Partnership



Edgbaston

EarlyHelpEdgbaston@gatewayfs.org
0121 456 7821

Erdington

ErdingtonFamilies@compass-support.org.uk
0121 748 8199

Hall Green

Hallgreen.families@greensquareaccord.co.uk
07570 953519 (9:30am to 4:30pm)

Hodge Hill

EarlyHelp-Hodgehill@family-action.org.uk
07976 199894

Ladywood

childrenandfamilies@bsettlement.org.uk
07764 977636

Northfield

NorthfieldFamilies@northfieldcommunity.org
07516 918 133

Perry Barr

PerrybarrEHnetwork@spurgeons.org
0121 752 1900

Selly Oak

EarlyHelp.Billesley@gmail.com
0121 441 4556

Sutton Coldfield

SuttonEHnetwork@spurgeons.org
0121 752 1860

Yardley

EarlyHelpYardley@barnardos.org.uk
0121 289 4875

