



Colmers Farm Primary School WEEKLY NEWSLETTER

Celebrating another special week at our nurturing school



Getting Your Child to School Really Matters



Did You Know... ?

In a School Year, If Your Child is Late Every Day By...	Your Child Would Have Lost Approximately...	or They Would Have Missed Approximately...
5 Minutes	3.5 Days from School	20 Lessons
10 Minutes	7 Days from School	41 Lessons
15 Minutes	10 Days from School	55 Lessons
20 Minutes	14.5 Days from School	82 Lessons
30 Minutes	22 Days from School	123 Lessons

Please Encourage Punctuality to Maintain Attendance

Friday 25th March 2022

Dear Parents/Carers

I hope that you have had a good week.

On Wednesday we held interviews for our vacant office manager position. I am delighted to say that we appointed Miss Evans who will be starting with us shortly after the Easter holidays. At Colmers Farm, pupil voice is something we really value. Two of our Year 4 school councillors (Oliver and Thomas) therefore took part in our interview process. A huge thank you to them for helping us choose between the candidates.

At school we sometimes have to deal with issues involving children who are playing online games outside of school hours, (which often have PEGI ratings above their chronological ages) and who are using/hearing threatening, derogatory or other abusive language. The consequences of these incidents, can often take up a lot of our time to deal with in school, which could be more productively spent elsewhere. It is your responsibility as parents to make informative decisions about which games your children play outside of school. We do however request that if you give your child permission to play 'social games', where they can communicate verbally with other players, that you remind your children about how to speak to others and to mute players who may be using inappropriate language. We also suggest that you regularly 'monitor' your children when they are playing these games. We thank you for your support.



Today, you should have received some information about our Easter Bonnet and our egg diorama competition which we will be running as part of our Easter celebrations. Since I started at Colmers Farm, I have been amazed by the creativity of our pupils and parents. I look forward to seeing everybody's creations.

IMPORTANT

As the Queen's Jubilee bank holiday falls within half term (similar to previous occasions such as the 2011 Royal Wedding and the 2012 Diamond Jubilee) the DfE has amended the Education (School Day and School Year) Regulations to reduce the school year for maintained schools by a day. Our school year will now conclude for all children at the end of the day on Tuesday 19th July 2022 and not on Wednesday 20th July as previously advertised.

DIARY DATES

27/03/22
Mother's Day

07/04/22
Year 3, 4, 5 and 6 Egg Diorama competition

08/04/22
New topic knowledge organisers coming home

08/04/22
EYFS, Year 1 and Year 2 Easter Bonnet Parade

08/04/22
Last school day before Easter holidays

Do you have a safeguarding concern about a child?

Contact:

safeguarding@colmersfarm.excelsiormat.org

Alternatively contact
Birmingham City Council
Children's Trust on 0121 303 1888

Emergency out-of-hours
number: 0121 675 4806

What's new on our website this week?



Separated parents policy (policies)

www.colmersfarm.excelsiormat.org

Very sadly we are saying goodbye to some of Worcester University teaching students today as they finish their placements with us. We wish Miss Rashbrook, Mr Vivona and Miss Slater all the best for the rest of their teaching course and their futures. Mr Blunt though will be returning to our school after Easter for his next placement.

I hope that you have a lovely weekend.

Mr Williams Headteacher

Good Attendance?

90% in a
test. Great!

percentage	grade
90% - 100%	A
80% - 89%	B
70% - 79%	C
60% - 69%	D
59% and below	F

90% attendance is
however concerning!

In a year that's

- 19 missed English lessons,
- 19 missed maths lessons;
- 19 missed phonics or reading lessons!

Please follow us on Twitter!

Our Twitter feed is where we celebrate the wonderful learning we see from our pupils everyday!



@Colmers_FarmPS



Happy Birthday Messages

For next week, we would like to wish a very happy birthday to:

Theo F 1K Age 6
Mini D 2B Age 7
Tahmid R 3H Age 8
Arley-Joe D 4J Age 9
Holly L 5T Age 10
Elissa R 5A Age 10

Troy G 1F Age 6
Tyla-Rose H 2H Age 7
Niamh M 3T Age 8
Thomas W 5T Age 10
Logan McA 5T Age 10



e-safety – Keeping your children safe online.

Does your child know these rules?

S

Stay Safe

Don't give out your personal information to people / places you don't know.

M

Don't Meet Up

Meeting someone you have only been in touch with online can be dangerous. Always check with an adult you trust.

A

Accepting Files

Accepting emails, files, pictures or texts from people you don't know can cause problems.

R

Reliable?

Check information before you believe it. Is the person or website telling the truth?

T

Tell Someone

Tell an adult if someone or something makes you feel worried or uncomfortable.

Pupil e-safety challenge



PEGI age ratings are used on computer games like ages are used on films. The idea behind these are to protect young people from content or environments that they are not ready to view or use. What is the PEGI rating for the popular game Fortnite?

- It does not have one.
- 7 years old.
- 12 years old.
- 16 years old.



This week's answer = C. One of the reasons it is rated as 12 is because of the violence involved in this game. One of the biggest issues with this game though is the social aspect within it, which can lead to children using insulting and derogatory language online to their 'friends'. If you are happy for your child to use this game, you should regularly remind them about how they talk to others online. You should also monitor them regularly.

Help your child become a better **READER**

Questions to ask your child while reading
nonfiction text.

- What is the main idea of the text?
- Can you tell me something you already know about this topic?
- What did you learn from reading the text?
- Are there any words that you do not know what they mean?
- What are some new words that you learned?
- Do you have any questions after reading this?
- Were there any features (diagrams, charts, pictures) that were important?
- Where could you find out more information about this topic?
- What questions would you ask the author about this topic?
- What would be a good title for this text?
- Can you think of another book that you have read about this topic? How was it similar? How was it different?
- Did you like the text? Why or why not?

fun-in-first.blogspot.com

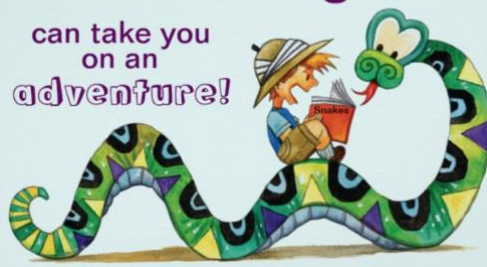
READ, READ, READ!

Reading is a key skill which is so important to any child's development at any age. Please try to listen to your child read at least once a day (for 10-15 mins ideally). It's also great for children to listen to you reading aloud as well.

As you know, our children in Years 1-6 have access to thousands of books online via myON. If you need help accessing this, please contact your child's

Reading

can take you
on an
adventure!



Help your child become a better **READER**

Questions to ask your child while reading
fiction text.

- Who is the main character?
- What is the setting in the story? Does the setting change?
- What was the problem in the story and how was it solved?
- Did the character change during the story? How?
- How are you like the main character? How are you different?
- What do you predict will happen next in the story?
- Why do you think the author chose this title for the story?
- Do you like the title of the story? Why or why not?
- Can you think of a different title for the story?
- Which character from the story would you choose to be your friend? Why?
- Which part of the story was the most exciting? Why?
- Did you like the end of the story? Why or why not?
- Which parts in the story could really happen? Which parts could not really happen?

fun-in-first.blogspot.com

Questions to ask your child when reading to them.



Accelerated™
Reader

	Class Name	Number of Points
1 st	6B	1,762,582
2 nd	6D	415,278
3 rd	5T	113,719
4 th	4J	78,484
5 th	4G	64,563
6 th	3T	57,564
7 th	5A	47,823
8 th	3H	19,244



Spelling Shed 

	Class Name	Number of Points
1 st	3T	109,224,463
2 nd	4G	61,676,162
3 rd	6B	50,018,809
4 th	6D	11,766,508
5 th	1W	7,521,206
6 th	3H	6,845,937
7 th	5T	5,365,798
8 th	4J	3,250,792
9 th	2B	2,645,628
10 th	2H	1,103,013
11 th	1F	965,742
12 th	1K	779,382
13 th	5A	74,400

Mathletics

	Class Name	Number of Points
1 st	6D	24,572
2 nd	3T	11,495
3 rd	4G	9,851
4 th	6B	8,640
5 th	5T	6,406
6 th	3H	6,340
7 th	4J	4,197
8 th	2H	2,700
9 th	2B	1,721
10 th	5A	860



Top 3 pupils - last week's top scorers	
1 st	Katieleigh (6B) 204,161
2 nd	Demi (6B) 198,227
3 rd	Jake (6D) 191620
Record Score	
Laila (6D) 787,079 words	

Top 3 pupils - last week's top scorers	
1 st	Ryan (4G) 35,052,780
2 nd	Mariam (3T) 22,678,242
3 rd	Kayleigh (3T) 20,051,959
Record Score	
Harvey (6B) 50,053,308	

Top 3 pupils - last week's top scorers	
1 st	Josie (6D) 4,565
2 nd	Stefania (5T) 3,580
3 rd	Sujaan (4J) 3,137
Record Score	
Ryan (4G) 10,110	



ATTENDANCE



1K



4J

This year's best attendance so far! Well done!

We are now halfway through the academic year. The table below shows the current attendance percentage to date for each class.

Remember: our school target is 96% or above!

Our whole school attendance to date is: **91.3%**

Class	% attendance this week	Number of lates this week
RC	79.3%	2
RF	86.6%	9
1F	88.6%	4
1K	93%	3
1W	89.5%	6
2B	92.1%	2
2H	90.7%	4
3H	96.7%	7
3T	95.4%	7
4G	91.7%	2
4J	97%	3
5A	90.9%	11
5T	94.4%	8
6B	85.9%	3
6D	92%	0

This Week's Hot Chocolate Winners

Congratulations to all of our hot chocolate winners this week. They are:

Ruby C	RC
Myah	1W
Hope	2H
Tahmid	3H
Demi-Lee	4J
Ayan	5A
Emaan	6B



This week's congratulations assembly recipients

Well done to:

Layton	RF	Michael I	1K	Zahara P.S	3T	Logan M	5T
Autumn	RC	Rio C	2B	Nazila A	4J	Riley P	6B
Esmee E	1W	Hope S	2H	Piper C	4G	Tyson A	6D
Sara N	1F	Lucia J	3H	Junior B	5A		



You have all demonstrated the key quality of reilience this week.

This week's house point results

342

Farah

317 

Thompson

361

Daley

310

Ennis-Hill

School Uniform

At Colmers Farm Primary School, we place a high priority on our children wearing the correct school uniform. Please note that our children are not allowed to wear trainers in school, unless this is short term with prior agreement.

For details about our school uniform requirements, please see the uniform section on our school website.

Thank you for your support with this.

Help with School Uniform

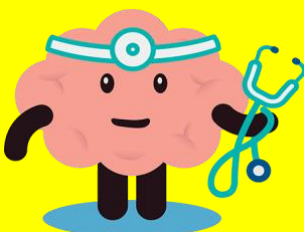


Rubery Community Swap Shop is a fabulous organisation which helps families by providing pre-loved school uniform, PE kit and footwear to them **FOR FREE**. Please visit www.ruberyswapshop.co.uk or ruberyswapshop@outlook.com for more information.



What should I do if I have any concerns about my child's mental health?

Please speak to your child's class teacher or a member of our school's pastoral team (Mrs Taylor, Miss Evans or Miss Storer).



Out of School Club Provision

for children from Rubery Nursery
School and Colmers Primary School*

*up to the age of 8 years old



Our Out of School Club offers children from 2 – 8 years old a safe and friendly environment with qualified and experienced members from our staff team. Children can choose from a range of activities relevant to their age and ability.

We offer snack to the children during the session. They can choose between cereal or toast for breakfast if they arrive before 8.30am and will receive a biscuit and a drink before 4.15pm. A light tea is offered for children staying after 4.15pm. For more information, please request a prospectus or phone us on the number below.



Breakfast Club is open from **7.30am - 9.am**
and After School **3.00pm - 5.30pm**

For more information and prices please contact our Reception on
0121 464 2158 or visit us at:

Leybrook Road, Rubery, Birmingham B45 9PB

www.ruberyn.bham.sch.uk



@RuberyNursery

Inspiring Independence, Confidence and Curiosity

Help for all families in Birmingham



Food
& Energy



Youth
Support



Domestic
Abuse



Emergency
Funding



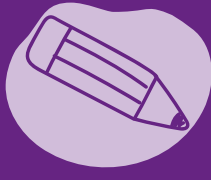
Money &
Debt Advice



Data & IT



Under 5's
Support



School Uniforms
& Clothing



Parenting



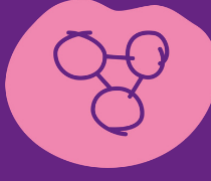
Special Needs
& Disabilities



Bereavement



Housing



Sexual
Health



Mental
Health



Play



Birmingham Children's Partnership



Edgbaston

EarlyHelpEdgbaston@gatewayfs.org
0121 456 7821

Erdington

ErdingtonFamilies@compass-support.org.uk
0121 748 8199

Hall Green

Hallgreen.families@greensquareaccord.co.uk
07570 953519 (9:30am to 4:30pm)

Hodge Hill

EarlyHelp-Hodgehill@family-action.org.uk
07976 199894

Ladywood

childrenandfamilies@bsettlement.org.uk
07764 977636

Northfield

NorthfieldFamilies@northfieldcommunity.org
07516 918 133

Perry Barr

PerrybarrEHnetwork@spurgeons.org
0121 752 1900

Selly Oak

EarlyHelp.Billesley@gmail.com
0121 441 4556

Sutton Coldfield

SuttonEHnetwork@spurgeons.org
0121 752 1860

Yardley

EarlyHelpYardley@barnardos.org.uk
0121 289 4875





Connect and Play Focus Groups

What?

We are looking for parents who are caring for children with complex needs and SEND aged 0-8 in Birmingham.

Can you tell us what's working, what's missing and help Sense to develop our new play service?

Each family will receive £40 for taking part, and support with transport costs. During the session we will be running sensory play and story sessions and refreshments will be provided.

Info or booking:

email: connectandplay@sense.org.uk

Call: 0203 833 0633



www.sense.org.uk

Charity number 289868

When?

Group 1: 10:00- 11:30am

Group 2: 12.30-2.00pm

Wednesday 30th March

Where?

Sense Touchbase Pears,
750 Bristol Road,
Selly Oak,
Birmingham,
B29 6NA.

Who?

For families of children
with complex SEND
needs aged 0-8 years old



sense

connecting sight, sound and life