



# Colmers Farm Primary School WEEKLY NEWSLETTER

Celebrating another special week at our nurturing school



## "Every Day Counts"

1 or 2 days a week doesn't seem that much but...

If your child misses	that equals...	which is...	and over 13 years of school that's...
1 day a fortnight	20 days per year	4 weeks per year	Nearly 1.5 years
1 day a week	40 days per year	8 weeks per year	Over 2.5 years
2 days a week	80 days per year	16 weeks per year	Over 5 Years
3 days a week	120 days per year	24 weeks per year	Nearly 8 years



Friday 6<sup>th</sup> May 2022

Dear Parents/Carers

I hope that you all enjoyed the extended weekend with your families.

Birmingham this year will be hosting the Commonwealth Games, which should be an amazing spectacle. Hopefully some of you will get the opportunity to see some of these events live. On Wednesday this week, our Year 3s and 4s had a special assembly about these games and an unexpected special visit from the game's mascot Perry the Bull.



Over the last few weeks, we have been asking parents/carers in the playground to complete a short survey about the school. Thank you to all the parents/carers who have taken some time to complete these for us. We really appreciate your time in doing this and we value all of your opinions.

On your child's PE days, please send your children into school in their PE kits. Please remember that this should consist of a plain red t-shirt and plain navy or black shorts/tracksuit bottoms. School jumpers can be worn over the t-shirts if required.

Punctuality is important. Please do your best to ensure that your child is on time every day. Please remember that the school doors open from 8:35. Aim to arrive at school for this time and your child will always be on time.

Please keep this term's topic homework coming in. We always love to see the creativity of our families who have worked together to create these.

## DIARY DATES

09/05/22  
KS2 SATs week

27/05/22  
School's Jubilee  
Celebration Day

27/05/22  
Last school day of school  
before the half term  
holidays

06/06/22  
Children return to  
school after half term

06/06/22  
Year 4 Timetable's  
Check Starts

Do you have a safeguarding concern about a child?

Contact:

[safeguarding@colmersfarm.excelsiormat.org](mailto:safeguarding@colmersfarm.excelsiormat.org)

Alternatively contact  
Birmingham City Council  
Children's Trust on 0121 303  
1888

Emergency out-of-hours  
number: 0121 675 4806

What's new on our website  
this week?



- Perry the Bull visits CFPS (News section)

[www.colmersfarm.excelsiormat.org](http://www.colmersfarm.excelsiormat.org)

Best of luck to all of our Year 6 children next week. They have done brilliantly in the build-up to SATs. I'm sure they will do their best. They are all amazing and no matter how they do, myself and their teachers could not be more proud of their efforts this year.

I hope that you enjoy the weekend.

Thank you for your continued support.  
Mr Williams (Headteacher)

## School Matters!



**Attend Today, Achieve Tomorrow**

**90% in a  
test. Great!**

percentage	grade
90% - 100%	A
80% - 89%	B
70% - 79%	C
60% - 69%	D
59% and below	F

**90% attendance is  
however concerning!**

In a year that's

- 19 missed English lessons,
- 19 missed maths lessons;
- 19 missed phonics or reading lessons!

## Please follow us on Twitter!

Our Twitter feed is where we celebrate the wonderful learning we see from our pupils everyday!



**@Colmers\_FarmPS**



## Happy Birthday Messages

For next week, we would like to wish a very happy birthday to:

Darcie-Leigh M	RC	Age 5	Dior S	2H	Age 7
Poppy C	3H	Age 8	Eulia P	3T	Age 8
Zahara PS	3T	Age 8	Jonah F	5T	Age 10
Charlie B	5A	Age 10	Junior B	5A	Age 10



## e-safety – Keeping your children safe online. Does your child know these rules?

**S**

### Stay Safe

Don't give out your personal information to people / places you don't know.



**M**

### Don't Meet Up

Meeting someone you have only been in touch with online can be dangerous. Always check with an adult you trust.

**A**

### Accepting Files

Accepting emails, files, pictures or texts from people you don't know can cause problems.



**R**

### Reliable?

Check information before you believe it. Is the person or website telling the truth?



**T**

### Tell Someone

Tell an adult if someone or something makes you feel worried or uncomfortable.



Follow these SMART tips to keep yourself safe online!

## Pupil e-safety challenge



You receive a nasty text message on your phone. What should you do?

- Send a nasty one back. They'll stop sending me these then.
- Ignore the message, block the number and delete it.
- Ignore the message, block the number and show it to a parent/carer.



This week's answer = C. If ever you receive nasty messages on your phone, you should always show these to your parents so that they can help you. Do not send nasty messages back.



## Help your child become a better **READER**

Questions to ask your child while reading  
nonfiction text.

- What is the main idea of the text?
- Can you tell me something you already know about this topic?
- What did you learn from reading the text?
- Are there any words that you do not know what they mean?
- What are some new words that you learned?
- Do you have any questions after reading this?
- Were there any features (diagrams, charts, pictures) that were important?
- Where could you find out more information about this topic?
- What questions would you ask the author about this topic?
- What would be a good title for this text?
- Can you think of another book that you have read about this topic? How was it similar? How was it different?
- Did you like the text? Why or why not?

fun-in-first.blogspot.com

### READ, READ, READ!

Reading is a key skill which is so important to any child's development at any age. Please try to listen to your child read at least once a day (for 10-15 mins ideally). It's also great for children to listen to you reading aloud as well.

As you know, our children in Years 1-6 have access to thousands of books online via myON. If you need help accessing this, please contact your child's

I CAN GO  
ANYWHERE  
IN A BOOK

## Help your child become a better **READER**

Questions to ask your child while reading  
fiction text.

- Who is the main character?
- What is the setting in the story? Does the setting change?
- What was the problem in the story and how was it solved?
- Did the character change during the story? How?
- How are you like the main character? How are you different?
- What do you predict will happen next in the story?
- Why do you think the author chose this title for the story?
- Do you like the title of the story? Why or why not?
- Can you think of a different title for the story?
- Which character from the story would you choose to be your friend? Why?
- Which part of the story was the most exciting? Why?
- Did you like the end of the story? Why or why not?
- Which parts in the story could really happen? Which parts could not really happen?

fun-in-first.blogspot.com

**Questions to ask your child when reading to them.**



**Accelerated™**  
Reader

	Class Name	Number of Points
1 <sup>st</sup>	3T	345,234
2 <sup>nd</sup>	5T	140,510
3 <sup>rd</sup>	6D	131,223
4 <sup>th</sup>	6B	52,108
5 <sup>th</sup>	5A	48,616
6 <sup>th</sup>	4G	28,144
7 <sup>th</sup>	3H	14,434
8 <sup>th</sup>	4J	4,983



**Spelling Shed** 

	Class Name	Number of Points
1 <sup>st</sup>	4G	101,749,050
2 <sup>nd</sup>	3T	53,364,532
3 <sup>rd</sup>	6B	21,854,771
4 <sup>th</sup>	3H	9,002,094
5 <sup>th</sup>	1K	7,471,236
6 <sup>th</sup>	6D	4,434,370
7 <sup>th</sup>	5T	1,881,518
8 <sup>th</sup>	4J	627,874
9 <sup>th</sup>	2H	542,137
10 <sup>th</sup>	1W	448,047
11 <sup>th</sup>	1F	215,260
12 <sup>th</sup>	2B	0
13 <sup>th</sup>	5A	0

**Mathletics**

	Class Name	Number of Points
1 <sup>st</sup>	5T	11,025
2 <sup>nd</sup>	3T	7,320
3 <sup>rd</sup>	4G	7,240
4 <sup>th</sup>	2B	6,497
5 <sup>th</sup>	6B	4,600
6 <sup>th</sup>	6D	3,103
7 <sup>th</sup>	2H	2,300
8 <sup>th</sup>	3H	2,070
9 <sup>th</sup>	5A	1,759
10 <sup>th</sup>	4J	1,270



Top 3 pupils - last week's top scorers	
1 <sup>st</sup>	Samuel (3T) 217,791
2 <sup>nd</sup>	Violet (6D) 114,940
3 <sup>rd</sup>	Timothy (3T) 97,821
Record Score	
Laila (6D) 787,079 words	

Top 3 pupils - last week's top scorers	
1 <sup>st</sup>	Henry (4G) 57,067,848
2 <sup>nd</sup>	Ryan (4G) 42,127,704
3 <sup>rd</sup>	Niamh (3T) 10,793,912
Record Score	
Henry (4G) 65,604,074	

Top 3 pupils - last week's top scorers	
1 <sup>st</sup>	Jonah (5T) 5,672
2 <sup>nd</sup>	Stefania (5T) 5,020
3 <sup>rd</sup>	Henry (4G) 2,670
Record Score	
Khaleesi (2B) 12,770	





# ATTENDANCE



1K



4J

This year's best attendance so far! Well done!

The table below shows the current attendance percentage to date for each class.

Remember: our school target is 96% or above!

Our whole school attendance to date is: **91.6%**

Class	% attendance this week	Number of lates this week
RC	91.4	6
RF	83.0	0
1F	91.7	3
1K	95.6	1
1W	85.5	0
2B	93.8	1
2H	95.4	2
3H	93.5	2
3T	92.3	3
4G	95.8	1
4J	94.2	3
5A	87.5	4
5T	82.9	2
6B	96.1	7
6D	93.1	3

## This Week's Hot Chocolate Winners

Congratulations to all of our hot chocolate winners this week. They are:

Lillie	RC
Emmett	1W
Angel	2H
Summer	3T
Tyler	4J
Chad	5A
Katie Leigh	6B



## This week's congratulations assembly recipients

Well done to:

Luckie C	RC	Logan R	RF	Winnie Mae G	1W
Nate H	1K	James S	1F	Kayla A	2B
Ella-Mae	2H	Alfie A	3H	Ma'Laysia H	3T
Piper V	4J	Tiahna J	4G	Ula S	5A
Stefania R	5T	Macie E	6B		



You have all demonstrated the key quality of reilience this week.

## This week's house point results

445

Farah

489

Thompson

460

Daley

502

Ennis-Hill



## School Uniform

At Colmers Farm Primary School, we place a high priority on our children wearing the correct school uniform. Please note that our children are not allowed to wear trainers in school, unless this is short term with prior agreement.

For details about our school uniform requirements, please see the uniform section on our school website.

Thank you for your support with this.

## Help with School Uniform

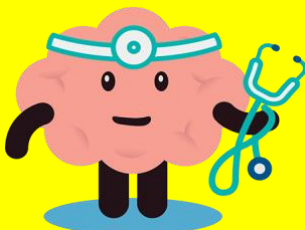


Rubery Community Swop Shop is a fabulous organisation which helps families by providing pre-loved school uniform, PE kit and footwear to them **FOR FREE**. Please visit [www.ruberyswopshop.co.uk](http://www.ruberyswopshop.co.uk) or [ruberyswopshop@outlook.com](mailto:ruberyswopshop@outlook.com) for more information.



## What should I do If I have any concerns about my child's mental health?

Please speak to your child's class teacher or a member of our school's pastoral team (Mrs Taylor, Miss Evans or Miss Storer).





# Out of School Club Provision

for children from Rubery Nursery  
School and Colmers Primary School\*

\*up to the age of 8 years old



Our Out of School Club offers children from 2 – 8 years old a safe and friendly environment with qualified and experienced members from our staff team. Children can choose from a range of activities relevant to their age and ability.

We offer snack to the children during the session. They can choose between cereal or toast for breakfast if they arrive before 8.30am and will receive a biscuit and a drink before 4.15pm. A light tea is offered for children staying after 4.15pm. For more information, please request a prospectus or phone us on the number below.



Breakfast Club is open from **7.30am - 9.am**  
and After School **3.00pm - 5.30pm**

For more information and prices please contact our Reception on  
**0121 464 2158** or visit us at:

**Leybrook Road, Rubery, Birmingham B45 9PB**

[www.ruberyn.bham.sch.uk](http://www.ruberyn.bham.sch.uk)



**@RuberyNursery**

Inspiring Independence, Confidence and Curiosity

# Help for all families in Birmingham



Food  
& Energy



Youth  
Support



Domestic  
Abuse



Emergency  
Funding



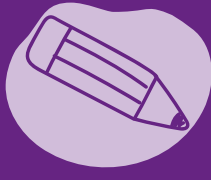
Money &  
Debt Advice



Data & IT



Under 5's  
Support



School Uniforms  
& Clothing



Parenting



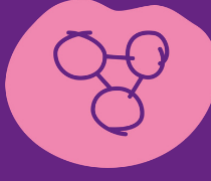
Special Needs  
& Disabilities



Bereavement



Housing



Sexual  
Health



Mental  
Health



Play



# Birmingham Children's Partnership



## Edgbaston

EarlyHelpEdgbaston@gatewayfs.org  
0121 456 7821

## Erdington

ErdingtonFamilies@compass-support.org.uk  
0121 748 8199

## Hall Green

Hallgreen.families@greensquareaccord.co.uk  
07570 953519 (9:30am to 4:30pm)

## Hodge Hill

EarlyHelp-Hodgehill@family-action.org.uk  
07976 199894

## Ladywood

childrenandfamilies@bsettlement.org.uk  
07764 977636

## Northfield

NorthfieldFamilies@northfieldcommunity.org  
07516 918 133

## Perry Barr

PerrybarrEHnetwork@spurgeons.org  
0121 752 1900

## Selly Oak

EarlyHelp.Billesley@gmail.com  
0121 441 4556

## Sutton Coldfield

SuttonEHnetwork@spurgeons.org  
0121 752 1860

## Yardley

EarlyHelpYardley@barnardos.org.uk  
0121 289 4875

