

# Colmers Farm Primary School

Leybrook Road  
Belton Grove  
Rubery  
Birmingham  
B45 9PB

Head Teacher: Mr Williams  
Deputy Headteacher: Miss Hooper  
Tel: 0121 716 0444  
Web: [www.colmersfarm.excelsiormat.org](http://www.colmersfarm.excelsiormat.org)  
Email: [enquiry@colmersfarm.excelsiormat.org](mailto:enquiry@colmersfarm.excelsiormat.org)



Monday 24<sup>th</sup> November 2025

## Reception Classes Attendance Letter

Dear Parents and Carers,

Starting school is an exciting milestone for your child, and we want to ensure they have the very best start to their learning journey. Regular attendance in **Reception is essential for building strong foundations that will support your child throughout their school years.**

Children who attend school every day:

- **Develop good habits early** – arriving on time and attending regularly sets a positive routine for life.
- **Build confidence and friendships** – consistent attendance helps children feel secure and part of the class community.
- **Make the most of learning opportunities** – every day counts in developing language, reading, and social skills.

Even at this early stage, missing school can make it harder for your child to keep up and feel settled. Good attendance now, leads to better progress and success in the future.

If your child is unwell or you have any concerns about attendance, please contact us so we can support you.

Of course, health comes first but usually children manage in school despite being tired or having a snuffle or a headache. We will happily keep an eye on them during the day and call you if they become more unwell. We will look after them!

Our Reception classes currently have the lowest attendance in the school. Let's try and make EYFS the best!



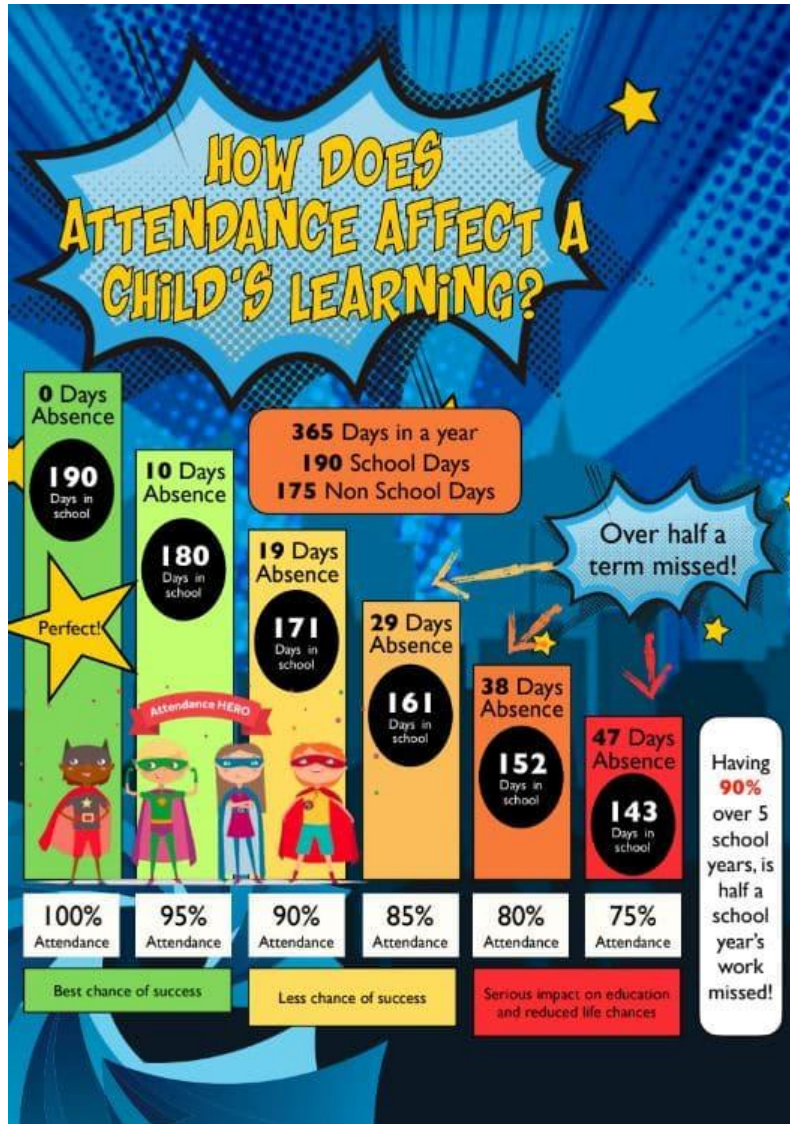
2022-2025



Artsmark  
Silver Award  
Awarded by Arts  
Council England



SCHOOL  
MEMBER



Together, we can give your child the strong start they deserve.

Thank you for your continued support.

Yours sincerely,

**Miss Hooper**  
**Interim Deputy Headteacher**  
**Attendance Lead**