

Key Vocabulary

- absorbs** - When something is soaked up.
- charity** - An organisation set up to raise for those in need.
- deaf** - When you can't hear.
- frequency** - A word that can describe sound.
- herding** - Bringing animals into a group.
- imprisoned** - Put in jail.
- mistreated** - Not cared for properly.
- mucus** - A slimy substance.
- neglect** - Not look after something properly.
- reflective** - Light bounces off it.
- RSPCA** - Royal Society for the Prevention of Cruelty to Animals.
- scent** - The smell of something.
- truffles** - A very expensive and rare type of food that grows underground near tree roots.



AMAZING ANIMALS

Year 2
(Summer Term)

Dear Parents,

Our next topic is Amazing Animals. Please help your children to prepare for this topic by helping them to learn the key words (in purple) and the facts on this sheet.

There are some homework activities on the back of this sheet. Your child can complete these at any time. Your child's teacher would love to see what they have created.

Thank you for your support.

Kind regards - Year 2 teachers

THERE ARE OVER 400 DIFFERENT RECOGNISED BREEDS OF DOGS AND MORE THAN 400 MILLION DOGS AROUND THE WORLD

DOGS ARE NOT COLOUR BLIND AND CAN SEE BLUES AND YELLOWS BEST

DOGS ONLY SWEAT THROUGH THE PADS ON THEIR PAWS

A PUPPY HAS 28 TEETH AND AN ADULT DOG HAS 42

A DOG'S SENSE OF SMELL IS 10,000 TIMES STRONGER THAN A HUMAN'S

DOGS CAN LEARN TO RECOGNISE UPTO 250 WORDS AND GESTURES

DALMATIANS ARE BORN COMPLETELY WHITE AND ONLY GET THEIR SPOTS WHEN THEY GET OLDER

DOGS CAN SEE IN THE DARK AS THEY HAVE A REFLECTING LAYER IN THEIR EYES

A DOG'S NOSE SECRETES A THIN LAYER OF MUCUS THAT ABSORBS SCENT THEY LICK IT OFF TO SAMPLE THE SCENT IN THEIR MOUTH

DOMESTIC DOGS HAVE BECOME THE MOST POPULAR COMPANION AND WORKING ANIMAL IN HISTORY

DOGS HAVE AROUND 100 MORE BONES THAN A HUMAN

THERE ARE MORE THAN 18 MUSCLES IN A DOG'S EAR

A PUPPY'S EYES DON'T OPEN FULLY TILL THEY ARE 12 DAYS OLD

A SMALL DOG'S HEART BEATS TWICE AS FAST AS A LARGE DOG'S

A DOG'S NOSE PRINT IS AS UNIQUE AS A HUMAN FINGERPRINT AND CAN IDENTIFY THEM

THE TALLEST DOGS ARE IRISH WOLFHOUNDS THE SMALLEST ARE CHIHUAHUAS

START HERE

FINISH HERE

Jobs for dogs

Dogs have many skills and they do many jobs to help humans. Some are listed below.

- Helping blind people;
- **Herding** sheep on a farm;
- Catching criminals;
- Searching for people in disaster areas;
- Searching bags at airports;
- Guarding buildings;
- Pulling sleds;
- Finding **truffles**;
- Fetching things for people who have disabilities.



A photo of Tigger - The world record holder for a dog having the longest ears.

Facts about dogs' ears

- (1) Puppies are born **deaf**;
- (2) A dog's ear position indicates his mood and attention;
- (3) Dogs can move their ears independently;
- (4) Dogs can hear higher **frequency** sounds than humans, but cats can hear even higher frequency sounds than dogs!
- (5) A bloodhound named Tigger holds the record for the longest ears (nearly 35cm long). It uses its ears to help direct smells to its nose.



What does your pet need?

Rabbits

- to chew to wear down teeth which grow all the time
- company - a neutered male and female make good friends
- a large hutch and safe rabbit run

Dogs

- to be groomed
- to be kept on a lead near traffic
- a collar, identity tag and microchip
- We all need regular health checks
- We all need lots of love and attention
- We all need fresh water and regular meals

Cats

- cat flap or litter tray
- lots of exercise and play
- to be microchipped

pdsa
for pets in need of vets

www.schoolspdsa.org.uk
for games, videos and pet care tips!
Freephone 0800 019 9144 Email schools@pdsa.org.uk

What happens if you mistreat animals in the UK?

If you **mistreat** or **neglect** animals, you could be fined or **imprisoned** (put in jail) for up to 5 years.



Homework Ideas

- (1) Draw/paint a sketch of your favourite type of pet.
- (2) Make a model dog or another pet.
- (3) Write a story about a pet's adventure.
- (4) Write instructions for how to look after your pet.
- (5) Design and make a toy for your pet (please bring this into your class and DO NOT give it to your pet).
- (6) Make a pet stick puppet.
- (7) Create a bar chart for which pets your family and friends have.
- (8) Create a lost pet poster.
- (9) Draw some pets skeletons.



REMEMBER TO BRING INTO SCHOOL ANY HOMEWORK THAT YOU COMPLETE TO SHOW YOUR TEACHERS.



There are many organisations that look after animals or types of animals that have been **mistreated**. The **RSPCA** (Royal society for the Prevention of Cruelty to Animals) is the largest in the UK.

What we do?

We're the world's oldest animal welfare **charity** - we've been protecting and caring for animals for almost 200 years! Here are just some of the things that we do.

Rescue and treat animals

Our inspectors investigate cruelty complaints every day of the year. If necessary, they will take animals away from harmful situations and make sure that they get the treatment and care they need.

Care for unwanted animals

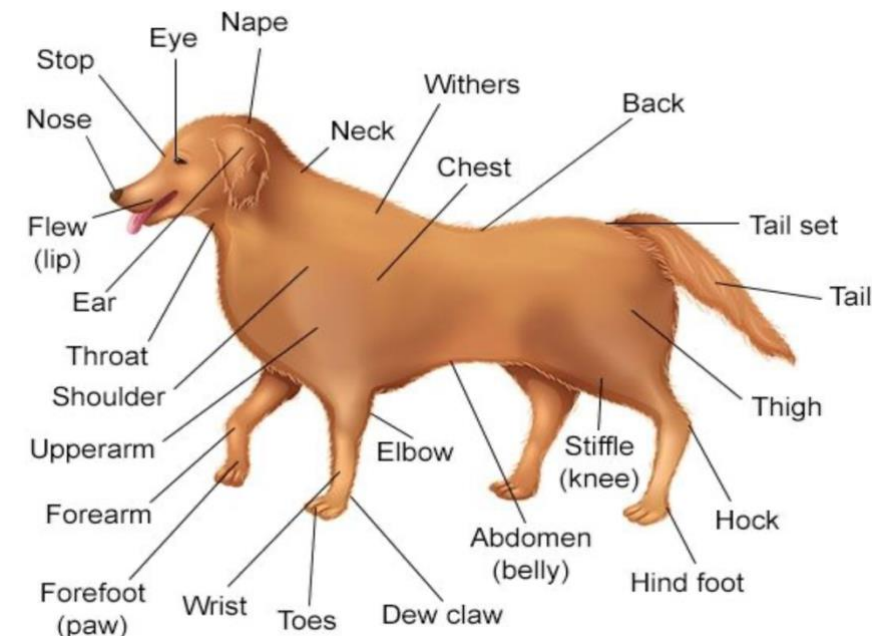
We have animal centres across the country where unwanted or abused animals are cared for until they can be found a new home. The **RSPCA** also has a small number of hospitals and clinics.

Try to change the law

We campaign on important issues and try to get a change in the law. A good example is when we helped make fox hunting illegal.

Educate people around the world

Our education department helps teachers and pupils to learn more about important animal issues. But we



Fun fact

Dogs have between 319 and 321 bone in their bodies. An adult human has only 206.

A picture showing the parts of a dog?

How many of these can you learn?