

### Key Vocabulary

**biome** - areas of the planet that have a similar climate and landscape, where similar animals and plants live.

**capital city** - A city that is home to the government of a country.

**climate** - The weather and temperature of an area over a long period of time.

**carbon dioxide** - A gas that is breathed out by animals and humans. This gas traps heat on the Earth making us warmer.

**deforestation** - The removal of trees from a forest.

**extreme weather** - Any weather that is different from normal.

**migration** - The movement of people (and animals) from one place to another.

**photosynthesis** - a process where plants take light, water and carbon dioxide and change it into food that they need and oxygen.

**tropical** - An area around the middle of the world where it is warm all year round.

**rainforest** - A tall, dense forest found in a **tropical** area that has lots of rain.

### The Rio Carnival

The Rio Carnival is the largest celebration in both Brazil and the whole world, with over two million people visiting Rio de Janeiro to take part in it each year. The Carnival lasts for five days and it takes place on the Friday before Lent (which is a Christian tradition before Easter). The Carnival dates back to the 1650s and it started as people playing games in the street and making fun of one another. Now it is very different with floats, colourful outfits, loud music and plenty of samba dancing.

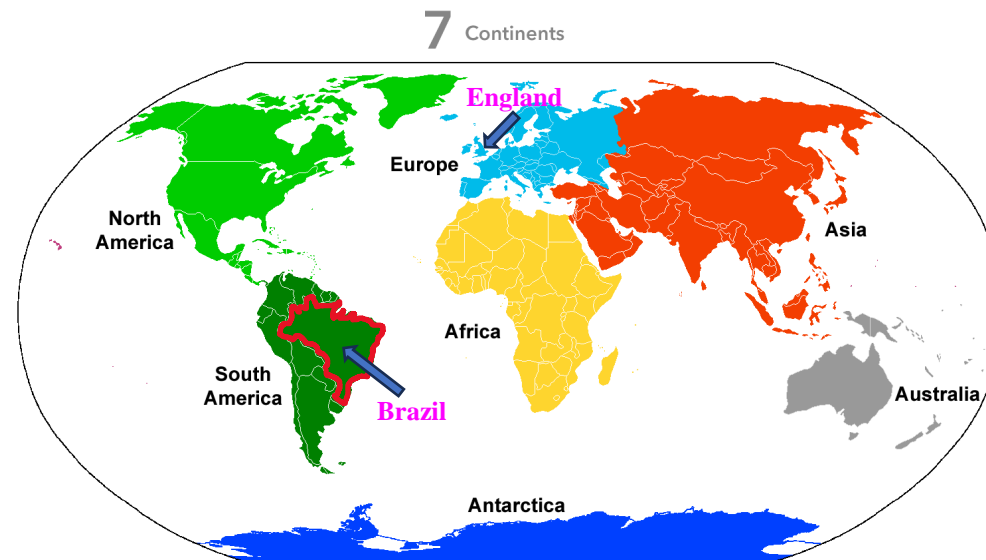


# Brazil

Excelsior  
Multi-Academy Trust

## Year 3 Geography/History Topic 1

Colmers Farm  
Primary School



Dear Parents,

Our next topic is *Brazil*. Please help your children to prepare for this topic by helping them to learn the key words (in purple on the left) and some of the facts on this knowledge organiser.

There are some homework activities on the back of this knowledge organiser. Your child can complete these at any time. Your child's teacher would love to see what they have created.

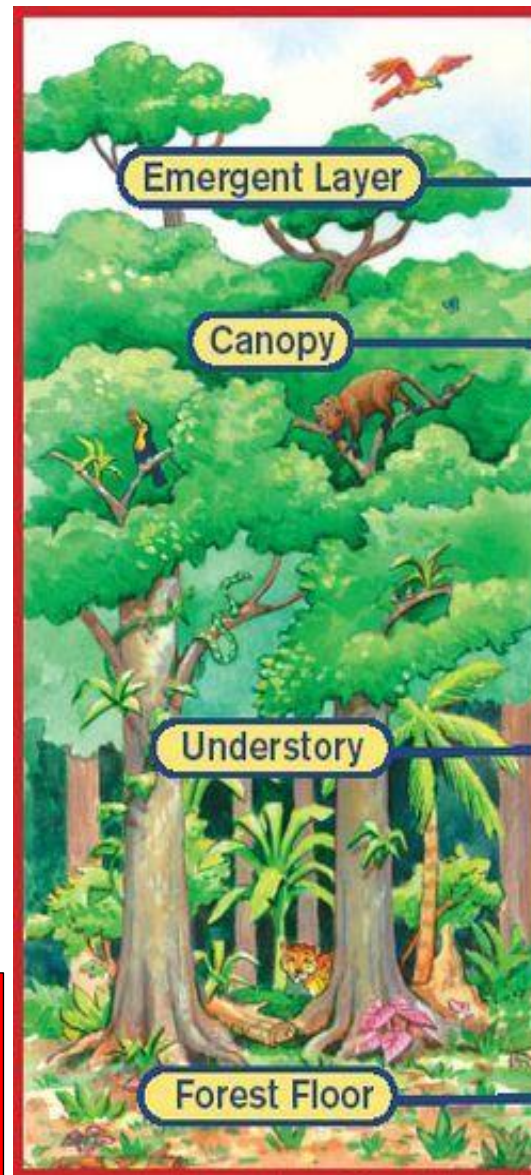
Thank you for your support.  
Kind regards - Year 3 teachers

### Fact

The world's largest rainforest is the Amazon Rainforest in South America.

### Fact

The Amazon Rainforest is home to 40,000 types of plant, 3,000 types of fish and 1,300 different birds.



Birds, bats, and butterflies live in the tops of the tallest trees. That is called the **emergent layer**.

In the tops of the shorter trees, or **canopy**, you can find animals such as toucans and monkeys.

Snakes, red-eyed tree frogs, and other animals live in the **understory**, or lower branches.

Animals such as jaguars can be found on the dark **forest floor**.

### Fact

Brazil's flag contains 27 stars. These represent the 27 states (regions) in Brazil.





# BRAZIL



**Brazil is the 5th largest country in the world by land area and population.**

It is called **Brasil** in Portuguese; it is the only country in South America that speaks Portuguese.



The territory now called Brazil was claimed for the Portuguese Empire on April 22, 1500, by Pedro Alvares Cabral. **Independence was confirmed in 1822.**



The capital of Brazil is **Brasilia** and the largest city is **Sao Paulo**.



**'Christ the Redeemer'** is a statue of Jesus Christ in Rio de Janeiro. It is among the Seven Wonders of the World.

The motto of Brazil is **"Ordem e Progresso"** which means Order and Progress in English.

The word "Brazil" comes from **Brazil wood**, a tree that grew abundantly along the **Brazilian coast**.



Animals of Brazil include **armadillo, tapirs, jaguars, pumas, caiman crocodile, the spotted ocelot**, and many other exotic reptiles and insects.



Brazil covers **three** time zones.

**75%** of Brazil's people live in the cities.

**60%** of the **Amazon Rainforest** is located in Brazil.



Brazil is the largest producer of **coffee** in the world.

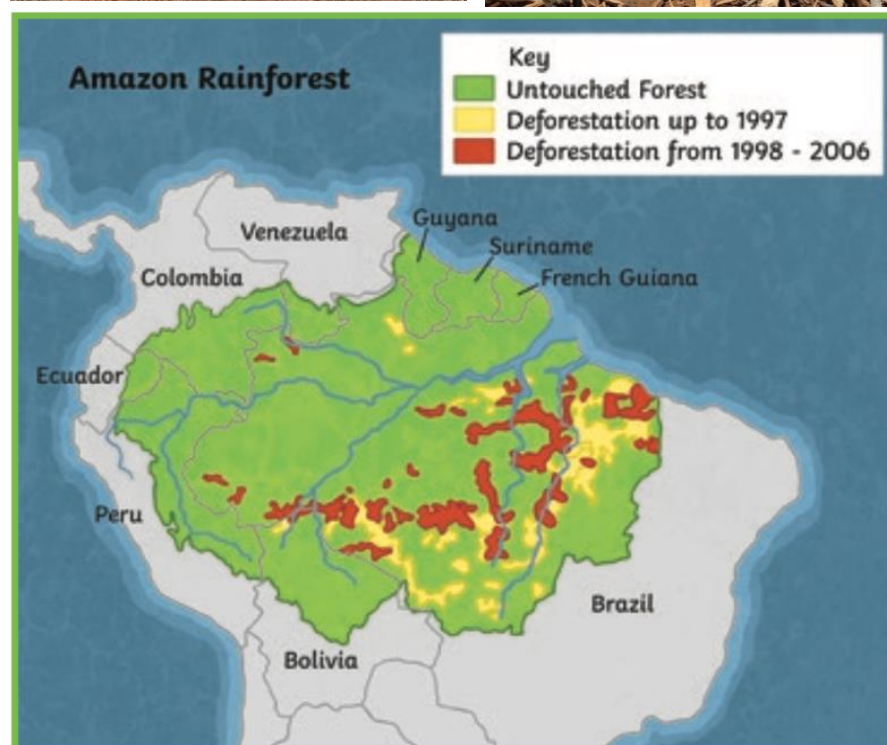


In Brazil, the **Iguassu Falls** consisting of **275 falls** is the largest group of waterfalls in the world.



Copyright © 2015 Mocomi & Anibrain Digital Technologies Pvt. Ltd. All Rights Reserved.

	Causes of Deforestation
1	To clear space for farming: growing crops (e.g. soya beans & palm oil) and space cattle to generate cheap beef.
2	Chopping down trees for wood.
3	To build roads to mine for metals, gold & diamonds.
4	To dig for oil.
5	To flood areas to make dams & generate electricity.



**Fact**  
Brazil was the first South American country to host the Summer Olympic Games (in Rio de Janerio) in 2016.

**Fact**  
Football is very popular in Brazil. Brazil have won the World Cup a record breaking 5 times.

	Impact of Deforestation
1	An area the size of 20 football pitches is destroyed every 60 seconds.
2	½ of the tropical rainforests we had are gone.
3	28,000 species of animals are expected to become extinct in the next 25 years.
4	Local people's homes are destroyed.
5	Levels of carbon dioxide in the air are increasing and oxygen is decreasing.

### Homework Ideas

- Make a musical instrument that you could play at the Rio Carnival.
- Draw a map of South America and label on it with Brazil and the other countries in South America. Do not forget to label ant the major rivers and cities too.
- Create a rainforest diorama for a box.
- Draw or make a model of some of the animals that you would find in the Amazon Rainforest. What facts can you find out about them?
- Create a model or a sketch of the Christ the Redeemer statue.
- Look at the research sheet about Brazil on the left of this page. Use the internet and information on her to create your own research project. Remember to include pictures and writing in this.
- Pele is one of Brazil's most famous footballers. What can you find out about him?





REMEMBER TO BRING INTO SCHOOL ANY HOMEWORK THAT YOU COMPLETE TO SHOW YOUR TEACHERS.